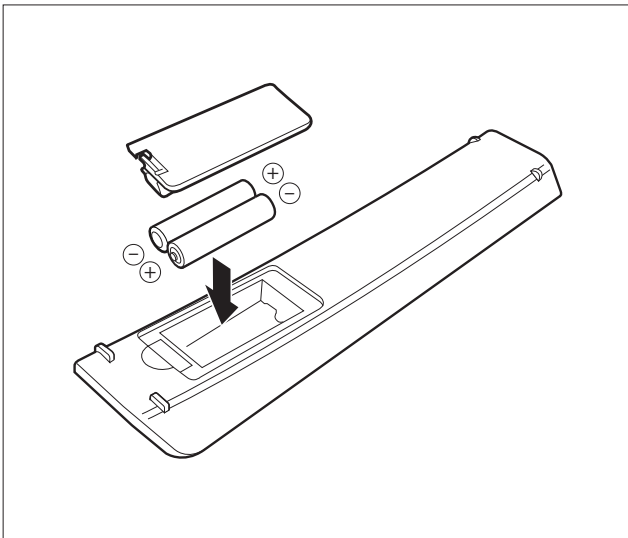


## Using the Remote Control

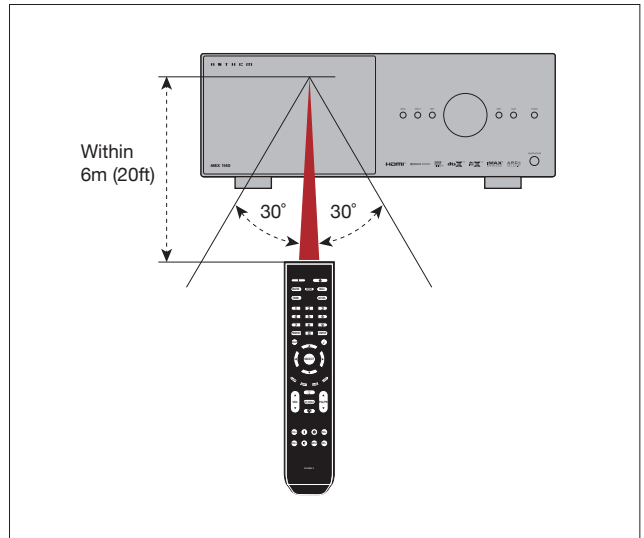
### Remote Control Battery Installation

Install batteries in the MRX/AVM remote control in the directions shown in the illustration below.



### Remote Control Range of Operation

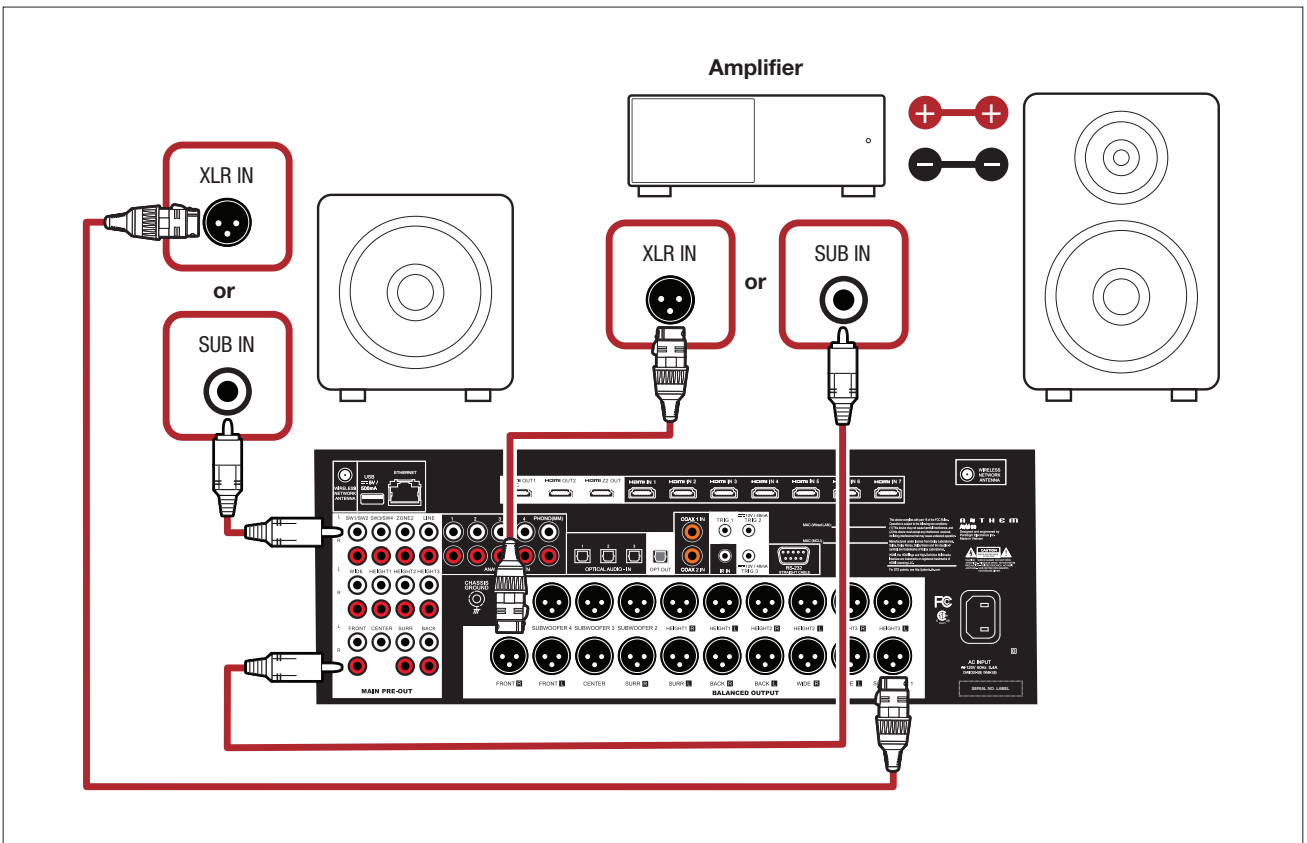
The MRX/AVM remote control operates best when used within the range and distance shown in the illustration below.



## Basic Connections

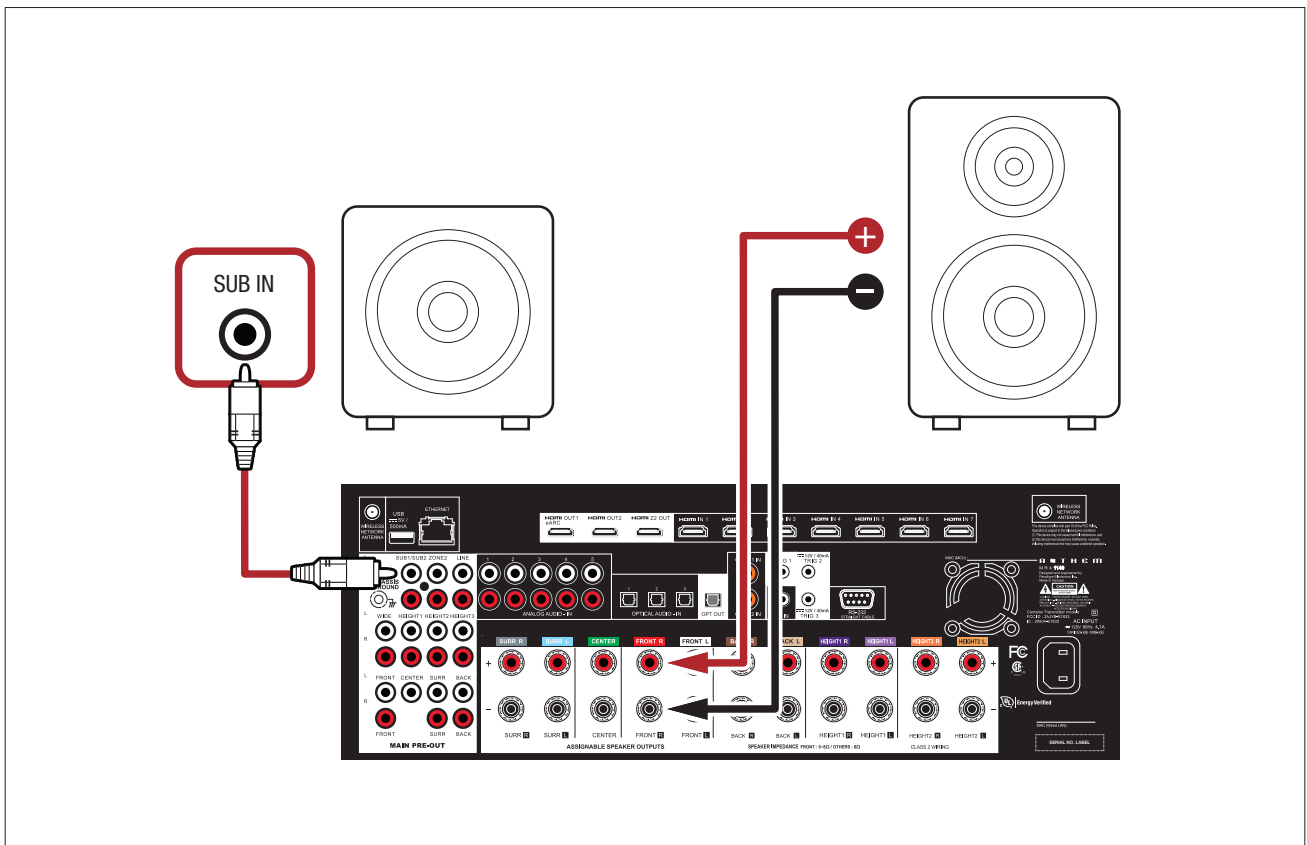
How to connect speakers and sources to your MRX/AVM.

### Speakers/Subwoofer (AVM 90/70 ONLY)

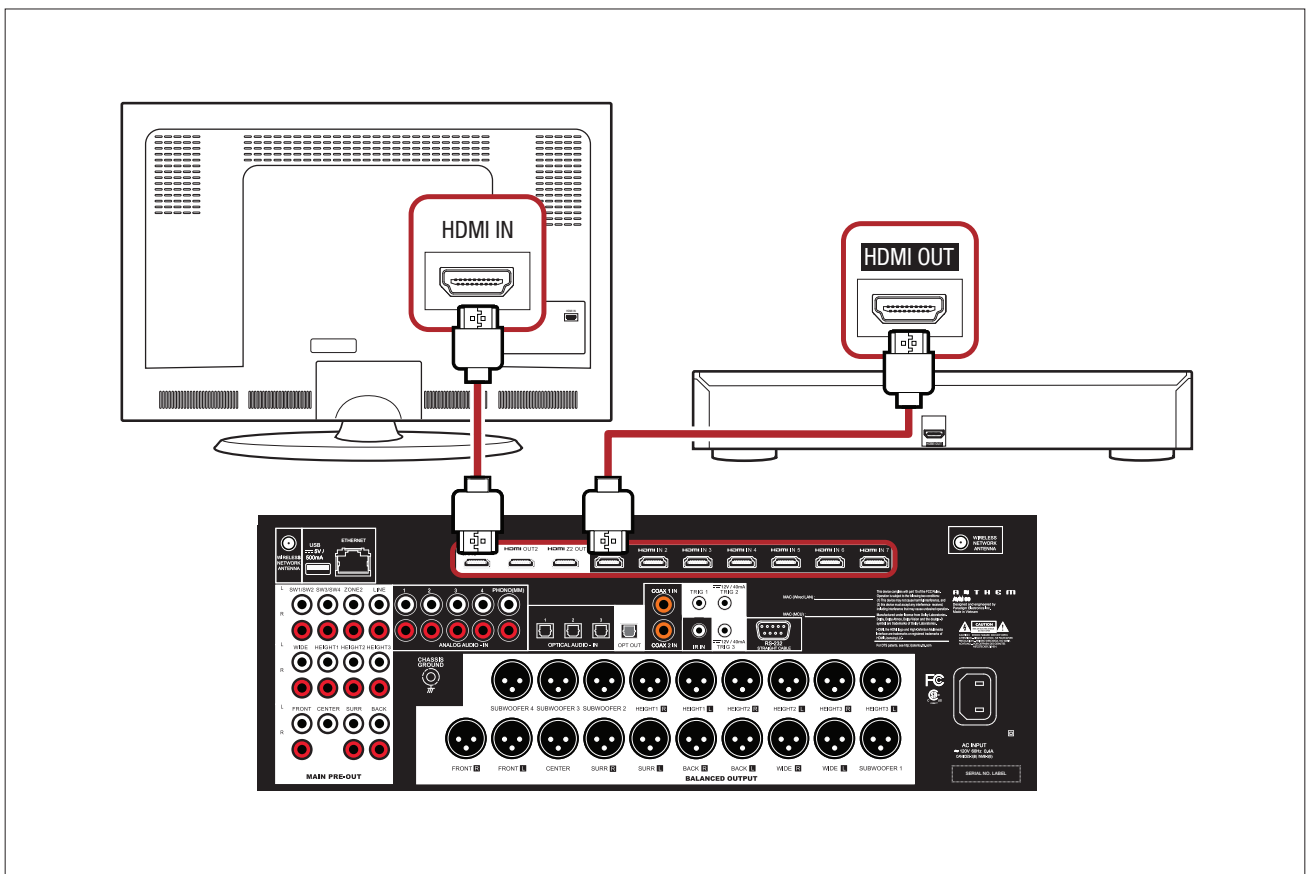


## Basic Connections (Continued)

Speakers/Subwoofer (MRX 1140/740/540 ONLY)



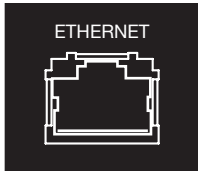
Sources (All MRX/AVM Models)



## Wired Network Setup

How to connect your MRX/AVM to your network. A network connection is required for accessing the Web UI, streaming content, and for running Anthem Room Correction.

**Ethernet Connection:** The simplest way to connect your MRX/AVM to your network is by connecting it via Ethernet cable. This option isn't always available, but it will provide the quickest setup and most secure network connection. To connect via Ethernet, simply take an ethernet cable that is connected to your network and plug it into the MRX/AVM's Ethernet port on the rear of the unit.



## Wireless Network Setup

**NOTE:** When using a wireless connection (WiFi or Bluetooth), both antennae's must be connected to the unit.

**iOS Wi-Fi Connection:** Ensure your Apple device is connected to the wireless network you wish to connect the Receiver/Processor to.

1. Enter the Wi-Fi Settings Menu.
2. Locate MRX/AVM under "Set up new AirPlay speaker."
3. Select the unit you wish to connect and allow it to connect to your network.

**NOTE:** The Receiver/Processor will appear as MRX/AVM in the AirPlay speaker menu. #

**Android Wi-Fi Connection:** Download and open the Google Home application. You should be prompted that there is a device available for setup. If not, tap "x" followed by "Setup a Device". Select the MRX/AVM and follow the instructions on screen. To listen to cast audio from any supported application on your MRX/AVM, ensure your device is connected to the same network as the MRX/AVM. Tap the Chromecast built-in icon from within the application and select the MRX/AVM as the playback device.

**NOTE:** If you connect to your network before connecting speakers, you will not hear the connection chime.

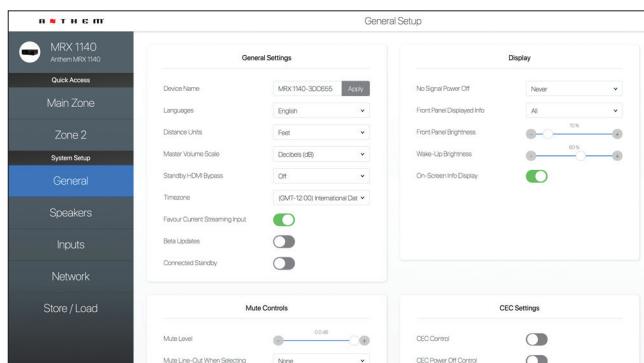
## Unit Setup

An introduction to setting up your MRX/AVM. Full details on the setup can be found in the manual on our website: [manuals.anthemav.com/mrx-avm/en](http://manuals.anthemav.com/mrx-avm/en)

## Anthem Web User Interface

The Anthem Web User Interface is a new addition to the MRX/AVM line. With your MRX/AVM on the network you can adjust menu settings with a device connected to the same network as the MRX/AVM; a phone, tablet or computer will work as it resizes to the screen you are using.

To access the Anthem Web User Interface, you will first need to identify your MRX/AVM's IP address. This can be found by entering the MRX/AVM Front Panel Menu: **Setup Menu > Network/Control > IP Configuration**. Once you have your IP address you will need to use a browser such as Safari or Google Chrome. After opening your browser, enter the IP address into the URL bar.



## Front Panel Menu

To access and navigate the Front Panel Menu, you will either need to use the Remote or the Front Panel Buttons.

**Remote:** Press SETUP to enter the menu. Once in the menu, you can use the UP/DOWN/LEFT/RIGHT and ENTER buttons to navigate and make changes.

**Front Panel Buttons:** Press MENU to enter the menu. Once in the menu, you can use PREV/NEXT/VOLUME KNOB and SELECT to navigate and make changes.

## Inputs

**Virtual Inputs:** Anthem products use “Virtual Inputs.” What this means is that no physical input is tied to any input that is made or created, you can create and specify combinations you want. For example, you can make an input using HDMI 1 for video and HDMI for audio then make a second input using HDMI 1 for video and RCA for audio or another example would be to make 2 separate inputs using the exact same audio and video inputs but different speaker profiles. You can make up to 30 different Virtual Inputs allowing for a lot of customizability. For more details on Virtual Inputs, see our full manual at: [manuals.anthemav.com/mrx-avm/en](https://manuals.anthemav.com/mrx-avm/en)

**Premade Inputs:** While the virtual inputs allow for customization, your MRX/AVM comes with premade inputs so you can turn it on and use it without any menu setup. These are HDMI 1, HDMI 2, HDMI 3, HDMI 4, HDMI 5, HDMI 6, HDMI 7, eARC, Streaming, Bluetooth, Optical 1, Coax 1, Analog 1, & Phono (AVM Models Only). These inputs can be deleted or modified at will but let MRX/AVM be used without any knowledge of virtual inputs needed.

## Anthem Room Correction® (ARC)

Anthem Room Correction (ARC) is a special technology that ensures your system will sound its best in any environment by adjusting the frequency response, level and phase of each individual speaker and subwoofer. It preserves the unique quality of your space and provides a natural and balanced sound.

For the software download and information on how to run ARC, visit our website at: [AnthemARC.com](https://AnthemARC.com)

Anthem and any related party assume no liability for the user's failure to comply with any requirements.

Anthem, AnthemLogic, ARC, Sonic Frontiers, and Paradigm are trademarks or registered trademarks of Paradigm Electronics Inc. © Paradigm Electronics Inc. All rights reserved. The information contained herein may not be reproduced in whole or in part without our express written permission. We reserve the right to change specifications or features without notice as design improvements are incorporated.

Google, Google Play, Chromecast, and other related marks are trademarks of Google LLC.

HDMI, the HDMI logo and High-Definition Multimedia Interface are trademarks or registered trademarks of HDMI Licensing LLC.

Wi-Fi® is a registered trademark of the Wi-Fi Alliance. The Wi-Fi CERTIFIED Logo is a certification mark of the Wi-Fi Alliance.

All other trademarks are the property of their respective owners.